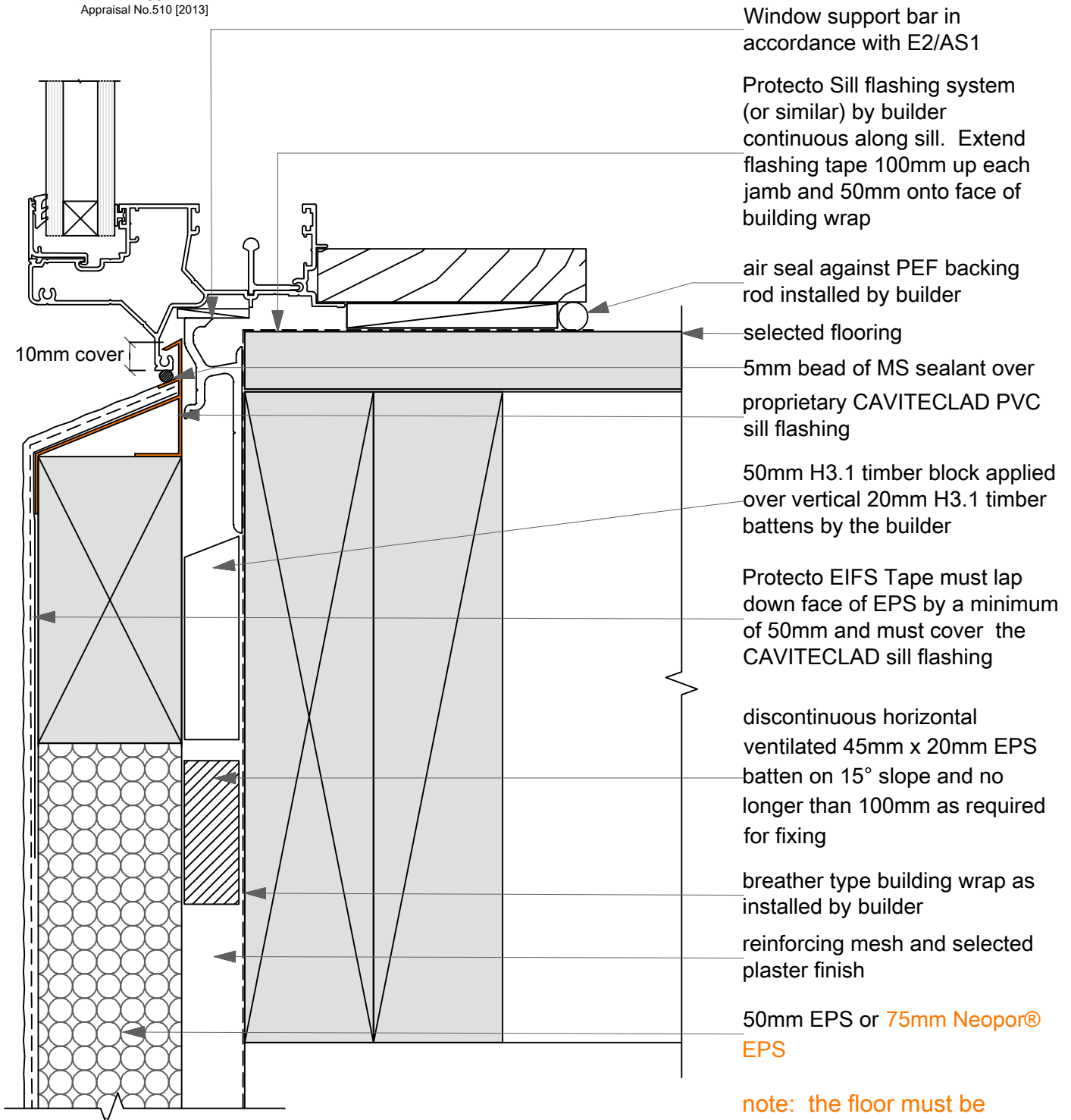


BRANZ Appraised
Appraisal No.510 [2013]



Window support bar in accordance with E2/AS1

Protecto Sill flashing system (or similar) by builder continuous along sill. Extend flashing tape 100mm up each jamb and 50mm onto face of building wrap

air seal against PEF backing rod installed by builder

selected flooring

5mm bead of MS sealant over proprietary CAVITECLAD PVC sill flashing

50mm H3.1 timber block applied over vertical 20mm H3.1 timber battens by the builder

Protecto EIFS Tape must lap down face of EPS by a minimum of 50mm and must cover the CAVITECLAD sill flashing

discontinuous horizontal ventilated 45mm x 20mm EPS batten on 15° slope and no longer than 100mm as required for fixing

breather type building wrap as installed by builder

reinforcing mesh and selected plaster finish

50mm EPS or 75mm Neopor® EPS

note: the floor must be sloped if the glazing pocket of the joinery is positioned past the line of the floor edge

08A

SCALE: 1:2

Door Sill: TIMBER FLOOR FRAMING

CAVITECLAD