



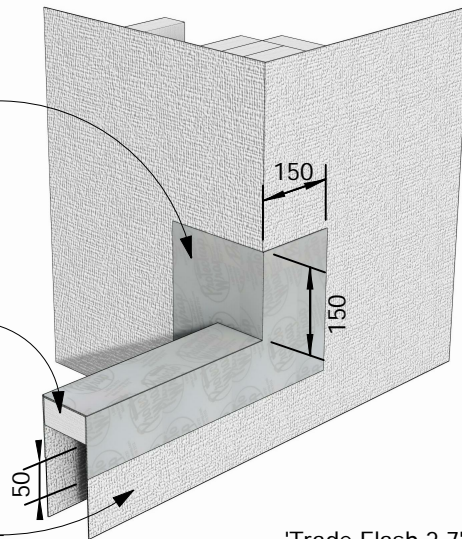
BRANZ Appraised
Appraisal No. 510 [2013]



Apply Protecto Tape over JS500 detail tape over Protecto Tak primer. Install over balustrade framing, down 50mm past top plate and lap 150mm onto wall

90 x 45 H1.2 (sg8) timber framing with studs @ 600 c/c and nogs @ 800c/c notched around edge joist balustrade 1.0m high above deck level

approved breather type building underlay to wrap up and over framing

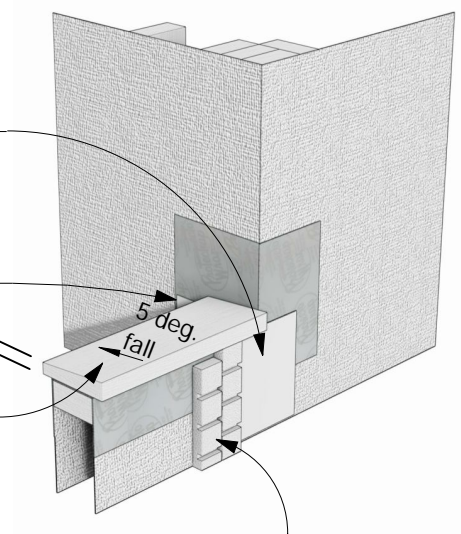


step 1

'Trade Flash 2.7' pvc flexible back flashing 200mm wide by marshall innovations

custom 0.55mm colorsteel internal corner flashing

H1.2 sloped timber packer 20mm high at low end with 5 deg. slope upwards

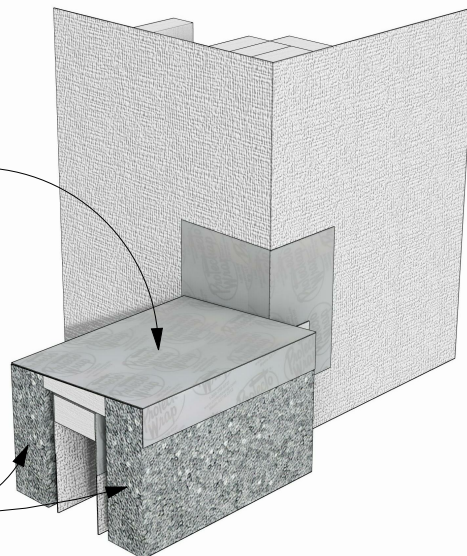


vertical 45 x 20mm EPS battens offset to close off ventilation grooves

step 2

Protecto EIFS tape membrane over cladding and sloped timber packer, 55mm minimum down each side to isolate aluminium capping from substrate

75mm Neopor® EPS on 20mm ventilated battens

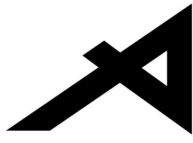


step 3



Junction Balustrade

Step 1,2 and 3



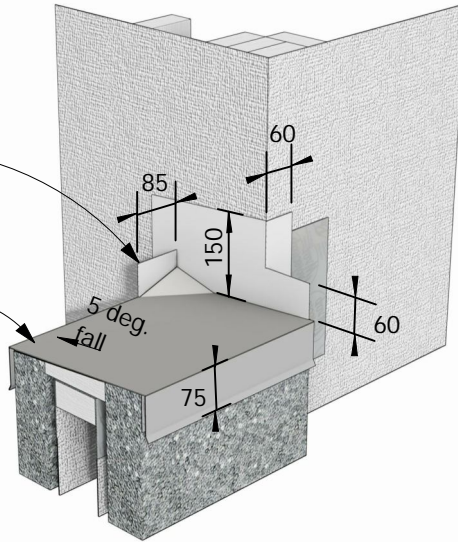
BRANZ Appraised

Appraisal No. 510 [2013]



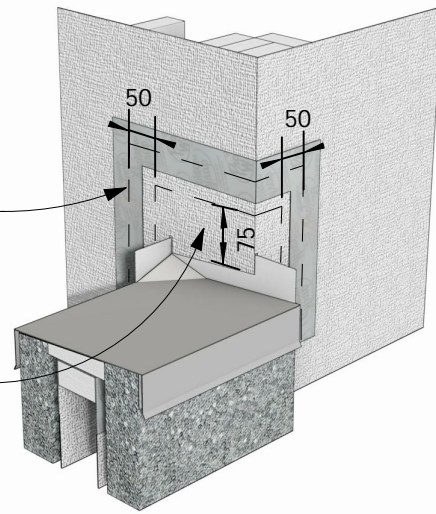
adjust to suit thickness of cavity and cladding

3mm powder coated aluminium saddle flashing with 5 deg slope (weld all joints). Cardboard templates approved by designer or site manager prior to production. Individually made to each specific location



step 4

use Marshall Innovations head flashing tape vertically to secure the second layer of approved building underlay
second layer of approved building underlay taped over saddle and back flashing



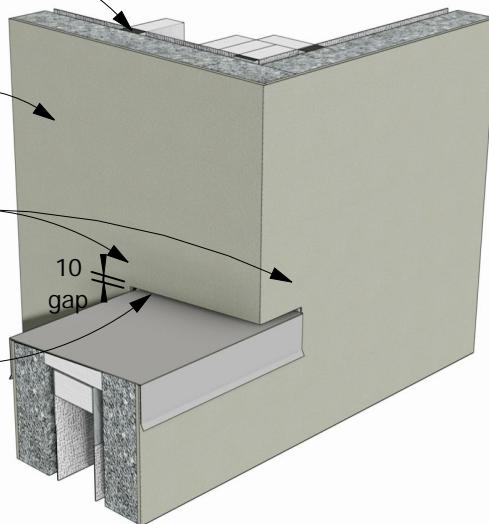
step 5

vertical 45 x 20mm EPS battens offset to close off ventilation grooves

75mm Neopor® EPS on 20mm ventilated EPS battens

mesh and plaster over flange of saddle flashing

leave 10mm drainage gap between cladding and saddle flashing



step 6



Junction Balustrade

Step 4,5 and 6



©copyright 2013 Specialized Construction Products Ltd

All dimensions to be site check before construction & installation

web www.specialized.co.nz