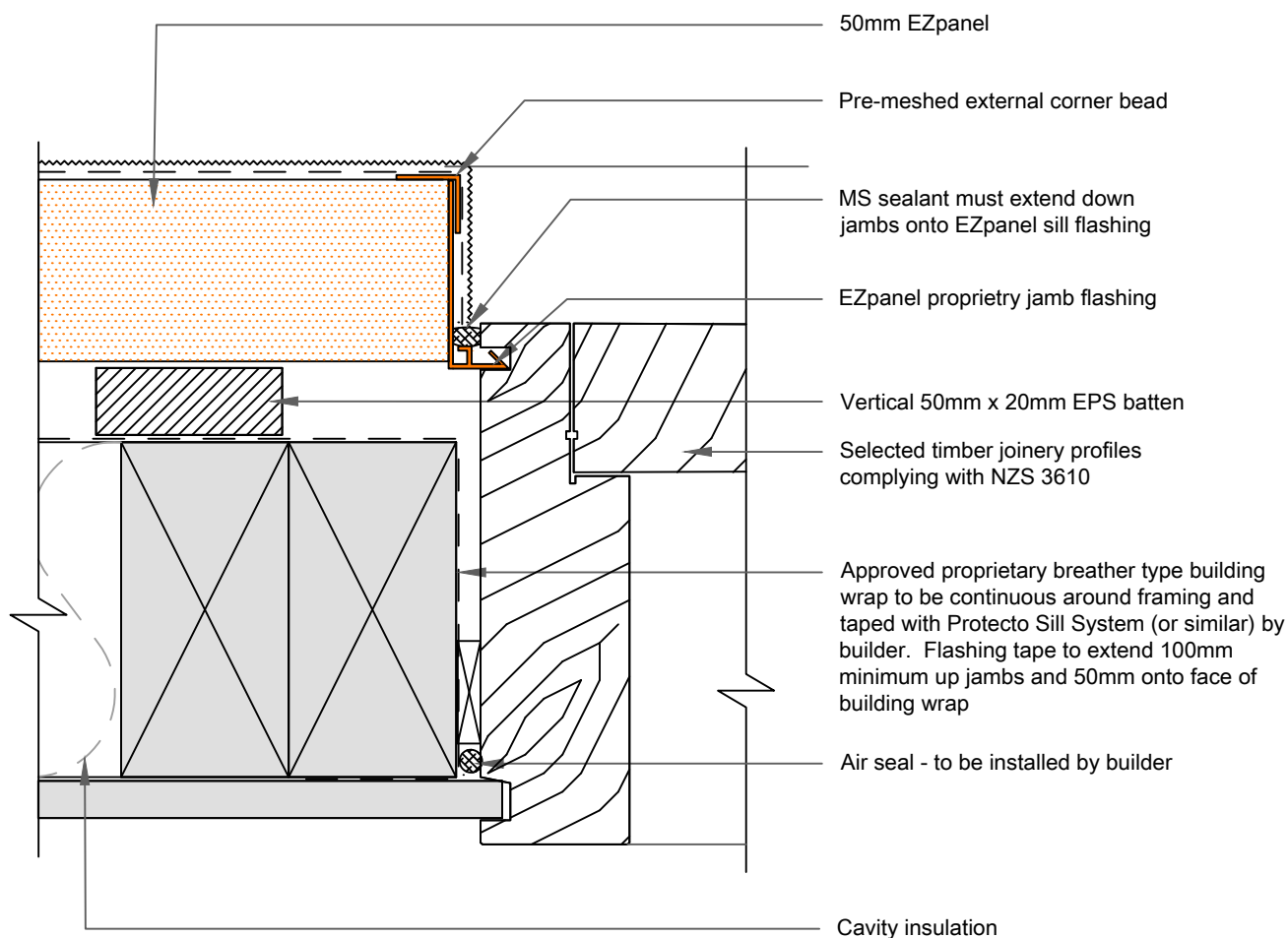




Note: This drawing is outside the scope of BRANZ Appraisal 649 (2009)



Note:
Jambs and head flashing must be sealed or PVC welded where they intersect

Caution:
To ensure the proprietry flashing for this system can be installed correctly, please allow a gap of 30mm from the surface of the building paper to the front face of the timber joinery

04B

TIMBER JOINERY JAMB

SCALE: 1:2

EZPANEL