

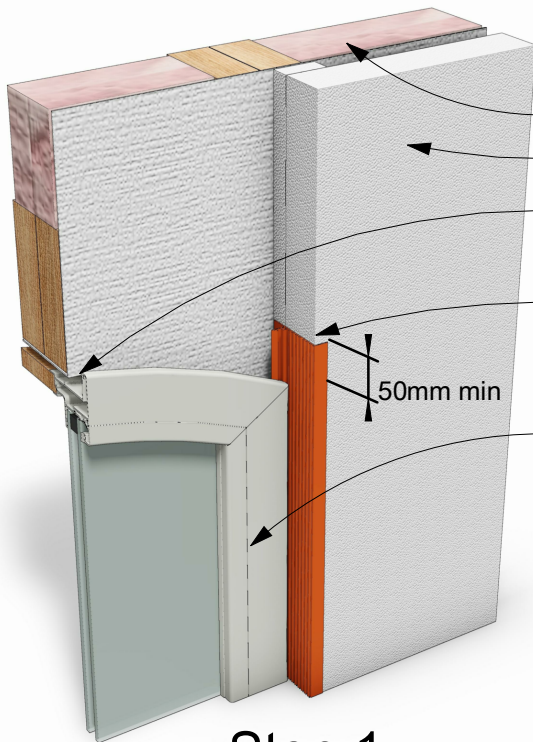


EzPanel

LIGHTWEIGHT CONCRETE CLADDING SYSTEM

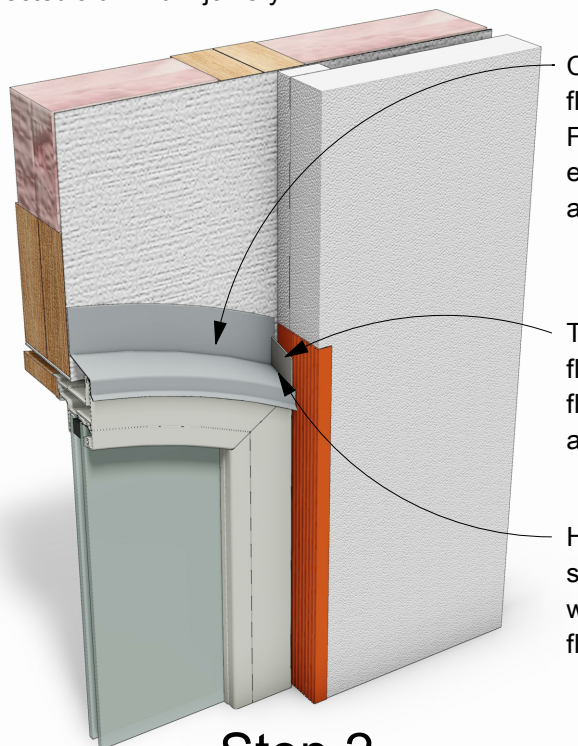


Note: This drawing is outside the scope of BRANZ Appraisal 649 (2009)



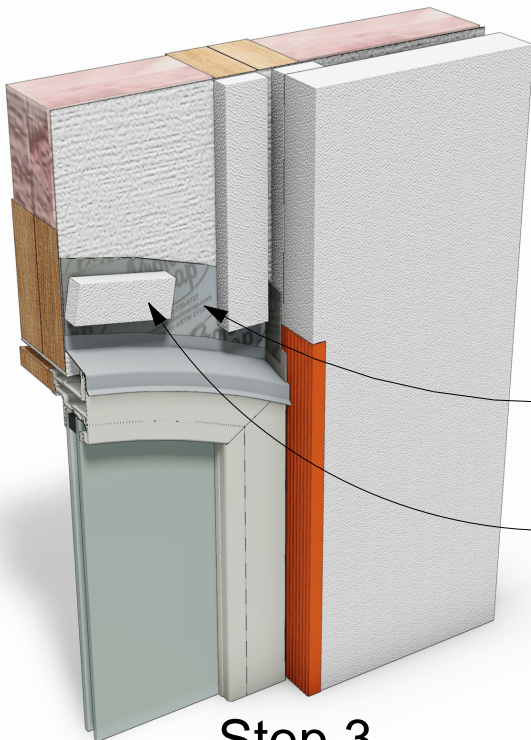
Step 1

- Cavity insulation minimum $R=0.9$.
- 50mm EZpanel
- Building underlay to be continued under lintel.
- Specialized Proprietary jamb flashing to extend min 50mm above window profile.
- Selected aluminium joinery.



Step 2

- Curved aluminium head flashing with 15° slope. Form folded stop ends to extend 25mm vertically against jamb flashing.
- Trim flange of jamb flashing to allow head flashing to sit hard up against jamb.
- Head flashing must be sealed to aluminium window and to jamb flashing.



Step 3

- Tape head flashing against building underlay with Protecto wrap tape or similar.
- Discontinuous horizontal 50 x 20mm EPS battens on 15° slope and no more than 100mm in length as required for fixings.

29

N.T.S

Curved Window Head Detail - Steps 1, 2, 3

EZPANEL

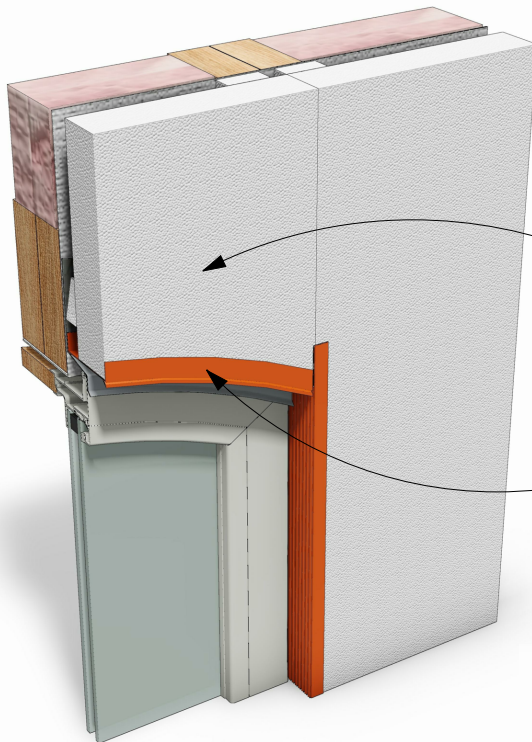


EzPanel

LIGHTWEIGHT CONCRETE CLADDING SYSTEM



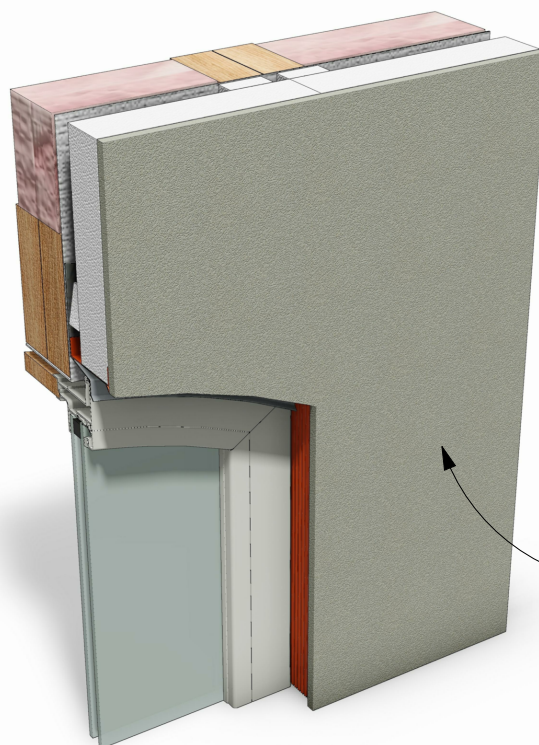
Note: This drawing is outside the scope of BRANZ Appraisal 649 (2009)



50mm EZpanel installed over window.

Specialized Flat Bottomed U-Channel.

Step 4



Specialized Construction Products selected plaster finish.

Step 5

29

N.T.S

Curved Window Head Detail - Steps 4, 5

EZPANEL