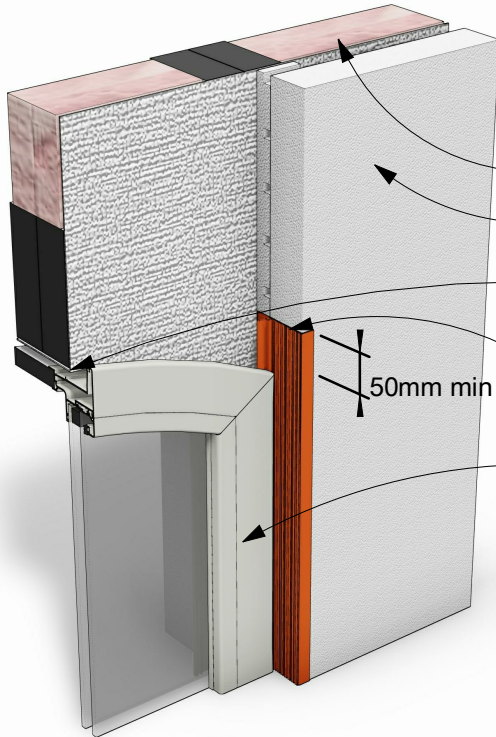
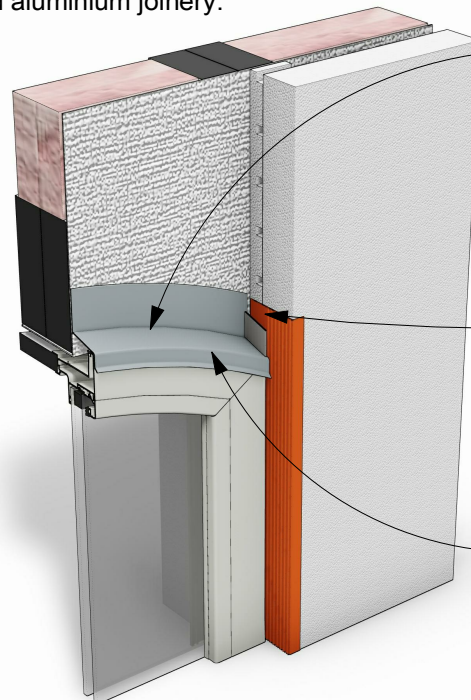


Note: This drawing is outside the scope of BRANZ Appraisal 510 (2013)



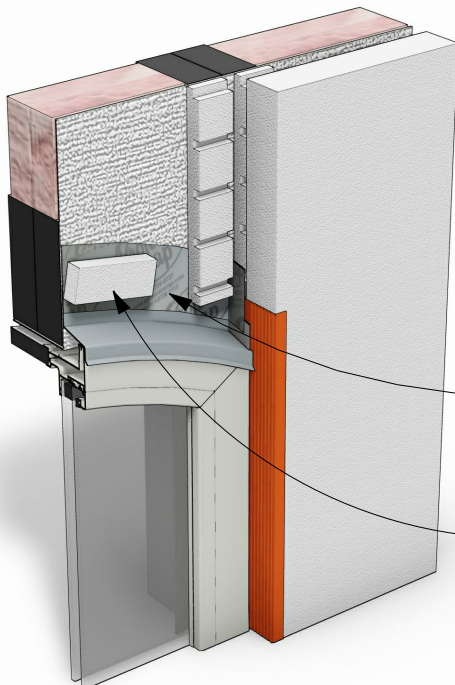
step 1

- Cavity insulation minimum  $R=0.9$ .
- EZPanel / Thermashell.
- Building underlay to be continued under lintel.
- Specialized Proprietary jamb flashing to extend min 50mm above window profile.
- Selected aluminium joinery.



step 2

- Curved aluminium head flashing with  $15^\circ$  slope. Form folded stop ends to extend 25mm vertically against jamb flashing.
- Trim flange of jamb flashing to allow head flashing to sit hard up against jamb.
- Head flashing must be sealed to aluminium window and to jamb flashing.



step 3

- Tape head flashing against building underlay with Protecto wrap tape or similar.
- Discontinuous horizontal 45 x 20mm EPS battens on  $15^\circ$  slope and no more than 100mm in length as required for fixings.

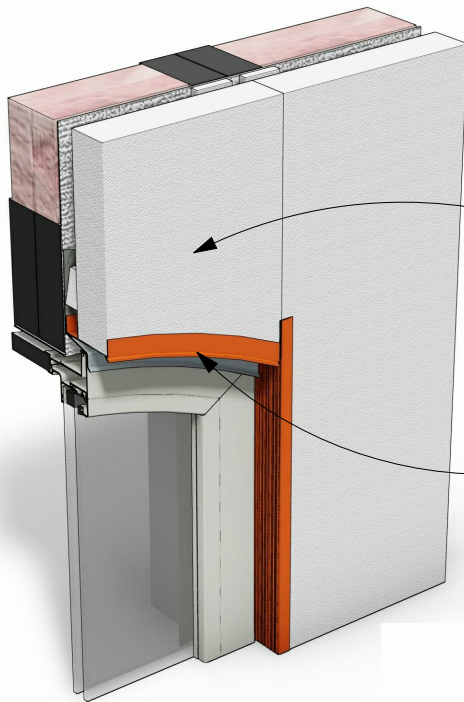
**32A**

**N.T.S**

## Curved Window Head Detail EZPanel/Thermashell

Step 1, 2 and 3

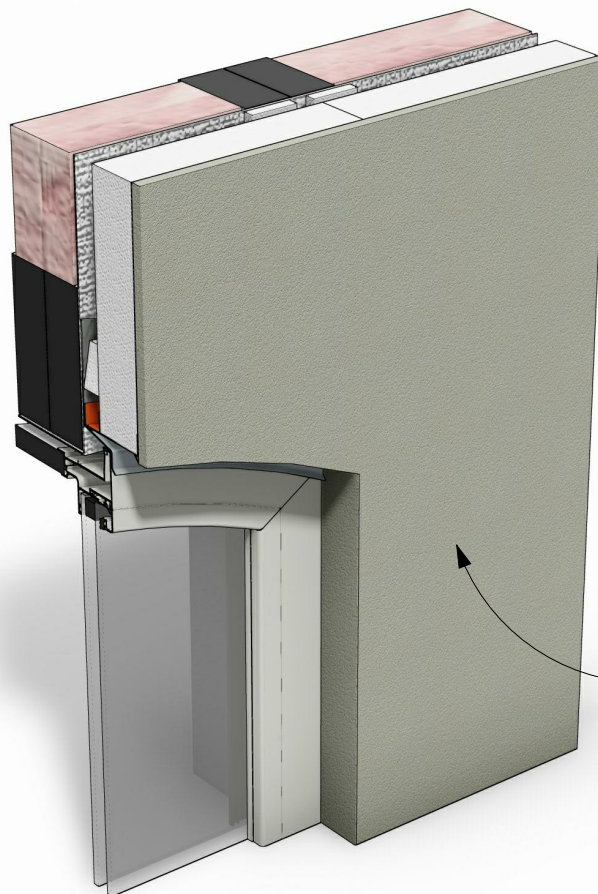
Note: This drawing is outside the scope of BRANZ Appraisal 510 (2013)



EZPanel / Thermashell installed over window.

Specialized flat bottomed U-Channel.

step 4



Specialized construction products selected plaster finish.

step 5

**32B**

N.T.S

## Curved Window Head Detail EZPanel/Thermashell

Step 4 and 5