



# EzPanel

LIGHTWEIGHT CONCRETE CLADDING SYSTEM

**Specialized**  
CONSTRUCTION PRODUCTS LTD

INTL90 - TWO Way FRR - Timber Frame - 90 minute -  
50mm EZpanel system with 1 layer of 16mm GIB ® Fyreline

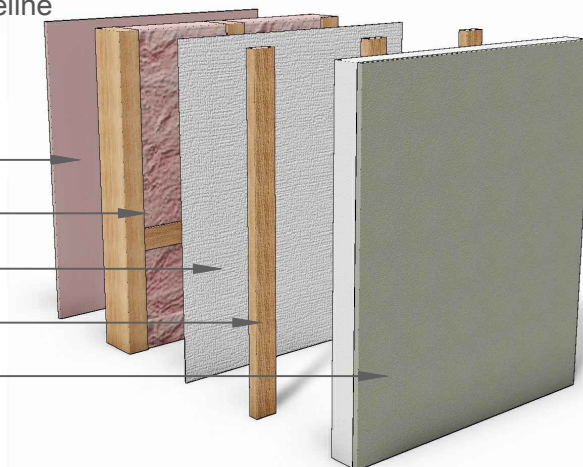
16mm GIB ® Fyreline

Timber Framing and Insulation

Building Underlay

Timber Battens

50mm EZpanel



## FRAMING TO COMPLY WITH

- NZBC B1 - Structure:AS1 Clause 3 - Timber (NZS 3604) or VM1 Clause 6 - Timber (NZS 3603)
- NZBC B2 - Durability: AS1 Clause 3.2 - Timber (NZS 3602)
- Studs at 600mm centers maximum
- Nogs at 1200mm centers for horizontal fixing

## CLADDING TO COMPLY WITH

- NZBC Clause B1 Structure
- NZBC Clause B2 Durability
- NZBC Clause E2 External Moisture
- NZBC Clause F2 Hazardous Building Materials

## WALL HEIGHTS

- Loadbearing - Framing dimensions and height as determined by NZS 3604 stud and top plate tables for load bearing walls.

## LININGS

- 1 layer of 16mm GIB ® Fyreline Plasterboard on the inside of the frame.
- Vertical or horizontal fixing permitted. Sheets shall be touch fitted.
- When fixing vertically, full height sheets shall be used where possible.
- All sheet joints must be formed over solid timber framing.

## LINING FASTENERS

- 41mm x 6g GIB ® Grabber High Thread Drywall Screws or
- 40mm x 2.8mm GIB ® Nails

## LINING FASTENER CENTERS

- 300mm centers on the sheet perimeter.
- Place fasteners 12mm from bound sheet edges and 18mm from sheet ends.
- Single screws or nails at 300mm centers to intermediate studs

## LININGS JOINTING

- All fastener heads stopped and all sheet joints tape reinforced and stopped in accordance with the publication entitled 'GIB ® Site Guide'

## CLADDING

- 1 layer of 50mm EZpanel installed over a timber batten

## CLADDING FASTENER CENTERS

- No closer than 50mm from the perimeter of the panel
- 2 screws per panel per stud
- Screws to be just below the surface of the panel

## CLADDING MORTAR JOINS

- Where panels join another panel or joints must use Sabre Fix PU builders adhesive to mortar the panels together

## BATTENS

- 20mm minimum thickness - to give a 20mm minimum width cavity
- 40mm minimum width
- H3.1 treated
- SG6 grade radiata pine timber
- 75mm X 3.15mm hot dip galvanised
- Fasteners at 300mm centers

**FE32**

SCALE: 1:2

## STANDARD DETAILS

EZPANEL - FRR 90/90/90