

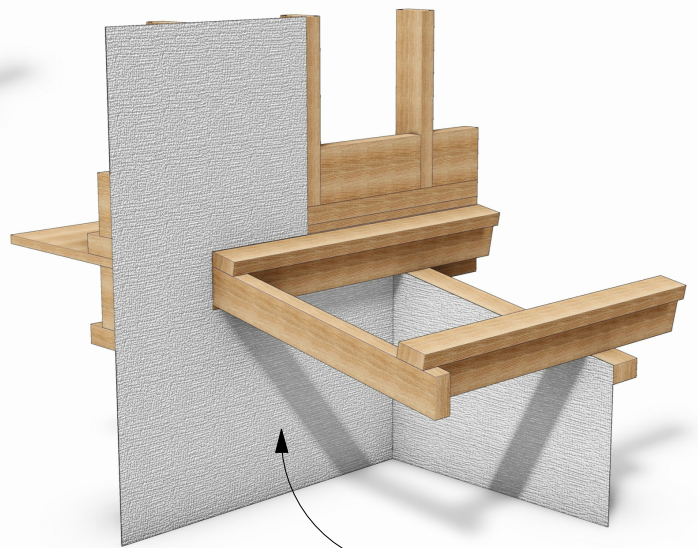


EzPanel

LIGHTWEIGHT CONCRETE CLADDING SYSTEM

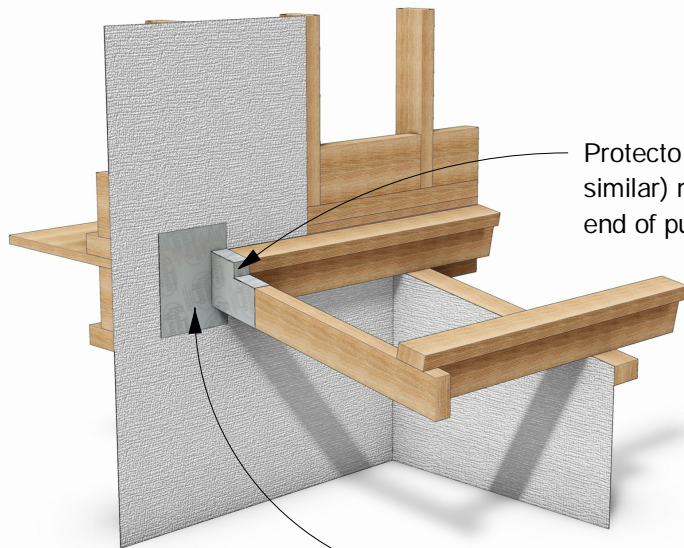


Timber Framing



Install approved breather type building underlay.

Step 1



Protecto tape (or similar) must cover end of purlin.

Step 2

Protecto tape (or similar) to be applied by the builder. Extend a min of 200mm down and around rafter.

30

N.T.S

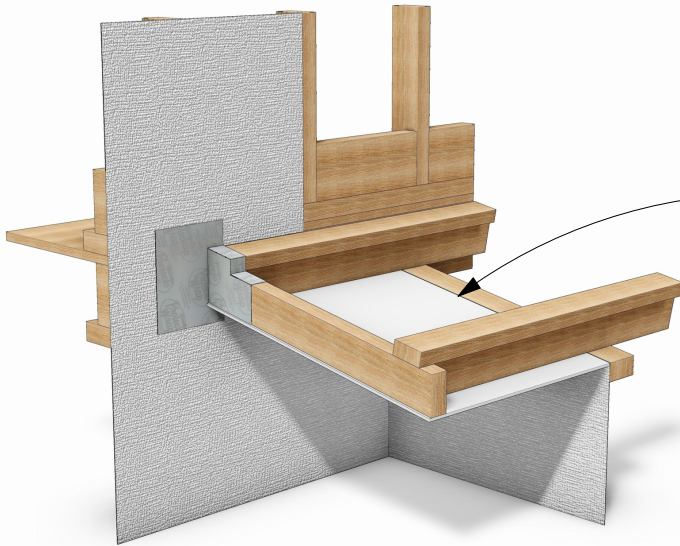
Fascia Wall Intersection - Steps 1, 2

EZPANEL



EzPanel

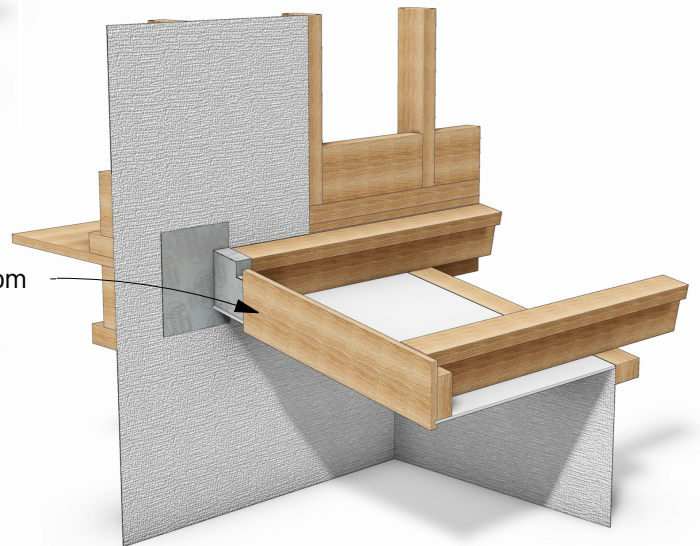
LIGHTWEIGHT CONCRETE CLADDING SYSTEM



Soffit is installed back to the building underlay.

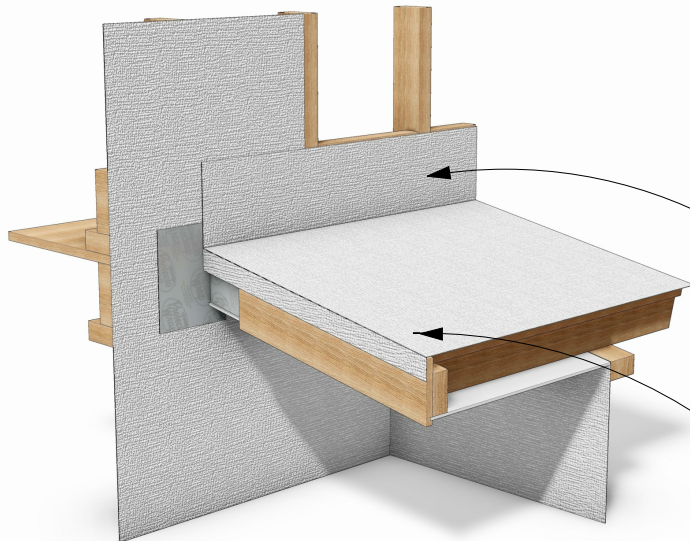
Step 3

Fascia is installed 110mm from wall - Taylor Fascia to have 20mm folded end to allow for backing rod and sealant.



Step 4

Roofing underlay to extend min 200mm up wall face.



Roofing underlay is installed.

Step 5

30

N.T.S

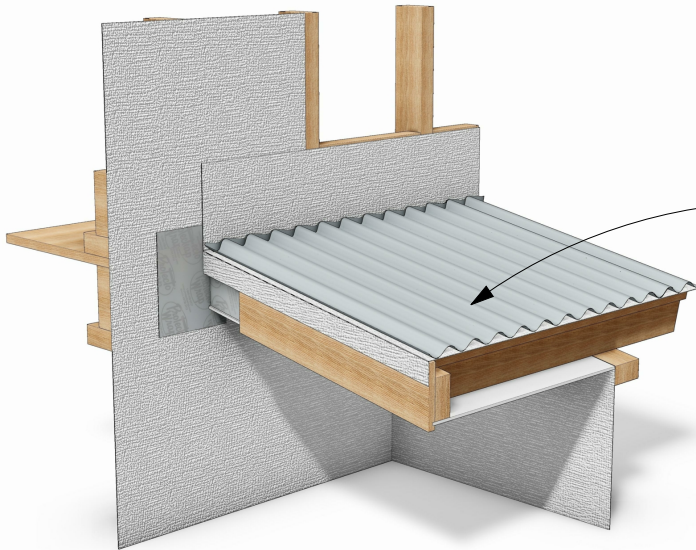
Fascia Wall Intersection - Steps 3, 4, 5

EZPANEL



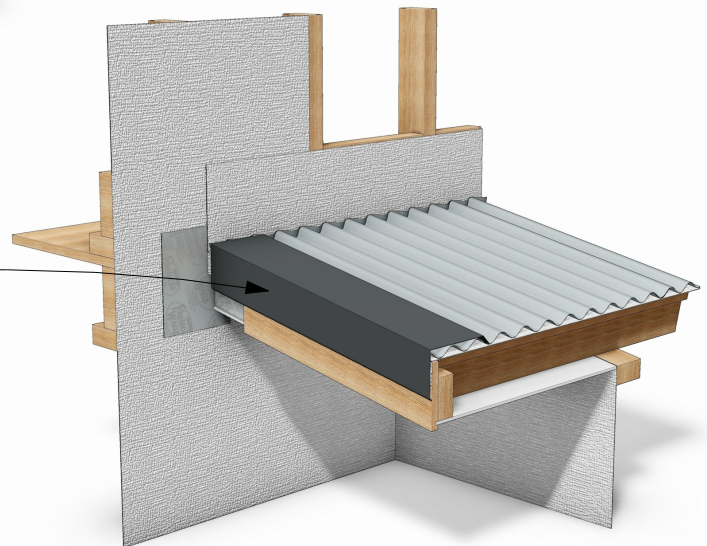
EzPanel

LIGHTWEIGHT CONCRETE CLADDING SYSTEM



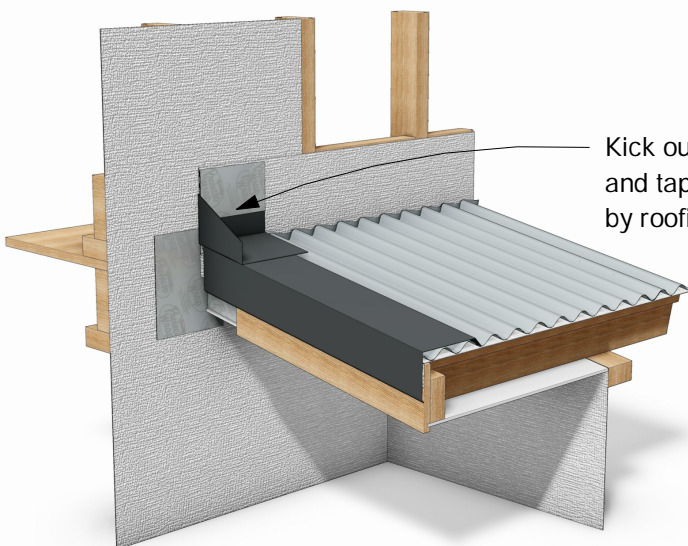
Selected roofing installed by roofing contractor.

Step 6



Fascia cap flashing installed by roofing contractor.

Step 7



Kick out flashing to be folded and taped to building underlay by roofing contractor

Step 8

30

N.T.S

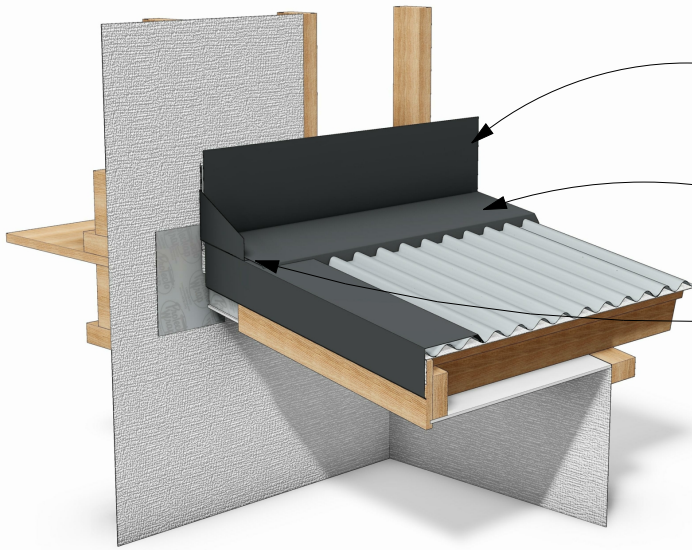
Fascia Wall Intersection - Steps 6, 7, 8

EZPANEL



EzPanel

LIGHTWEIGHT CONCRETE CLADDING SYSTEM



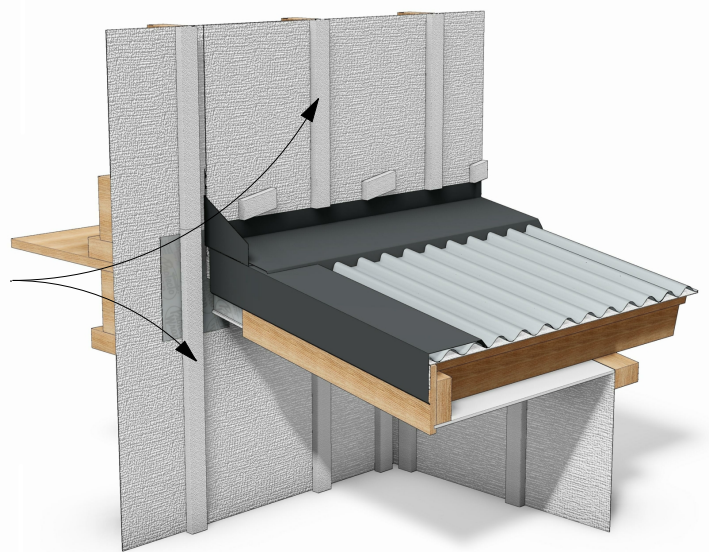
Apron flashing to extend a minimum of 200mm up wall face.

Apron flashing to be installed by roofing contractor.

Apron flashing to be folded down into kick out.

Step 9

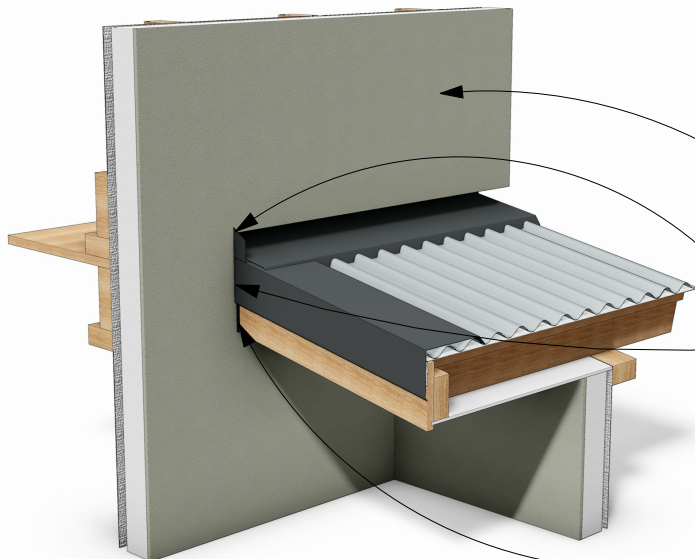
Install high density 20mm EPS battens as per BRANZ appraised specifications.



Step 10

Install 50mm EZpanel overcoated with Specialized reinforcing mesh and plaster system.

MS sealant to be carried up around fascia capping and kickout to form tight joint between the different substrates.



Step 11

Install 10mm PEF rod and 10mm bead of MS sealant to gap between end of fascia and finished plaster cladding

30

N.T.S

Fascia Wall Intersection - Steps 9, 10, 11

EZPANEL