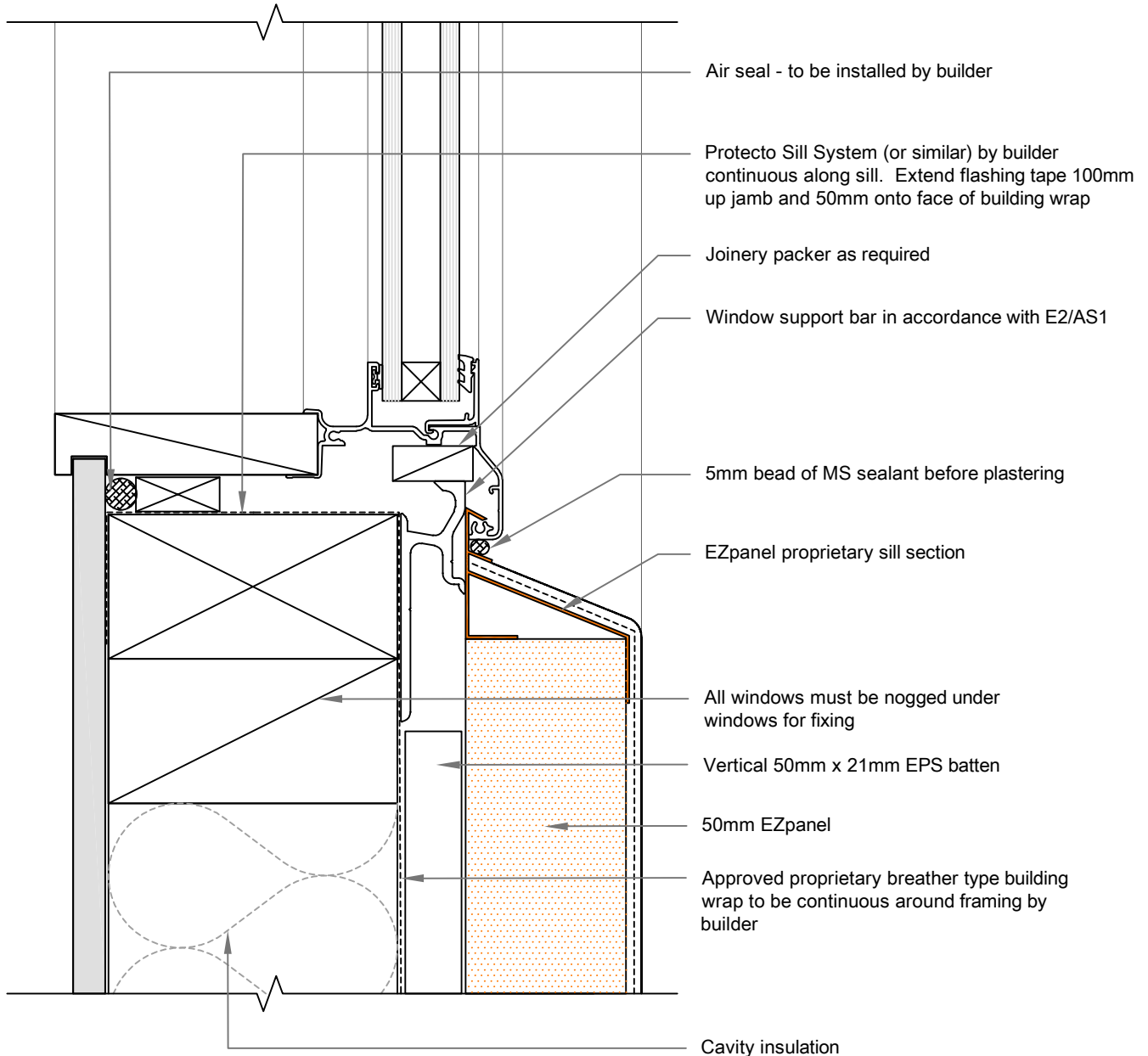




EzPanel

LIGHTWEIGHT CONCRETE CLADDING SYSTEM



Note:

A 5° sloped sill trimmer must be used if the back of the glazing pocket is positioned back past the line of wall frame

Caution:

To ensure the proprietary flashing for this system can be installed correctly, please allow a gap of 24mm from the surface of the building paper to the backside of the aluminium joinery

03A

SCALE: 1:2

WINDOW SILL DETAIL

50mm EZpanel - 20mm cavity with EPS Battens