

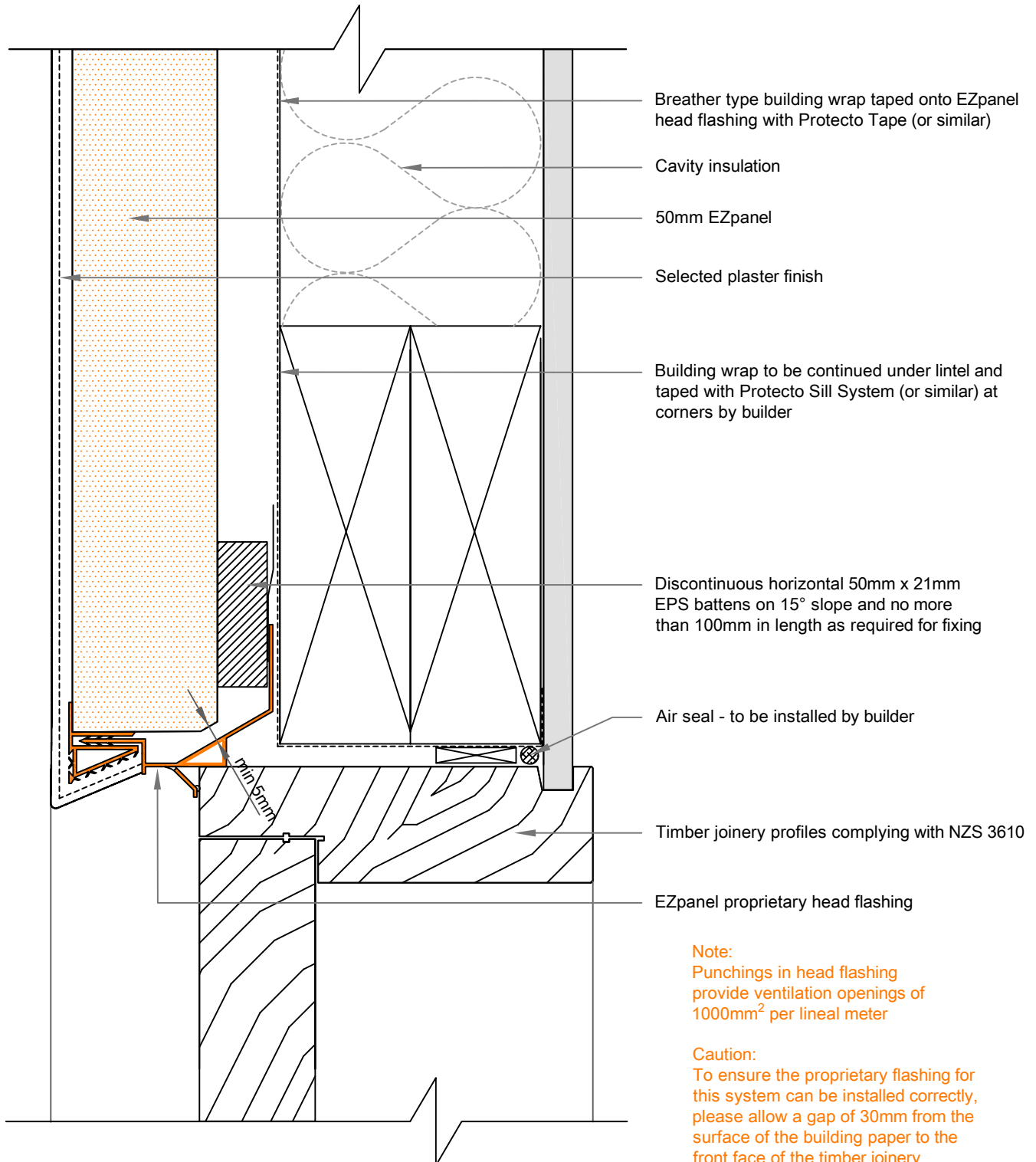


# EzPanel

LIGHTWEIGHT CONCRETE CLADDING SYSTEM



**Note: this drawing is outside of the BRANZ Appraisal.**



**Note:**  
Punchings in head flashing provide ventilation openings of 1000mm<sup>2</sup> per lineal meter

**Caution:**  
To ensure the proprietary flashing for this system can be installed correctly, please allow a gap of 30mm from the surface of the building paper to the front face of the timber joinery

**04A**

## WINDOW HEAD DETAIL - TIMBER JOINERY

SCALE: 1:2

50mm Ezpanel - 20mm cavity with EPS Battens