

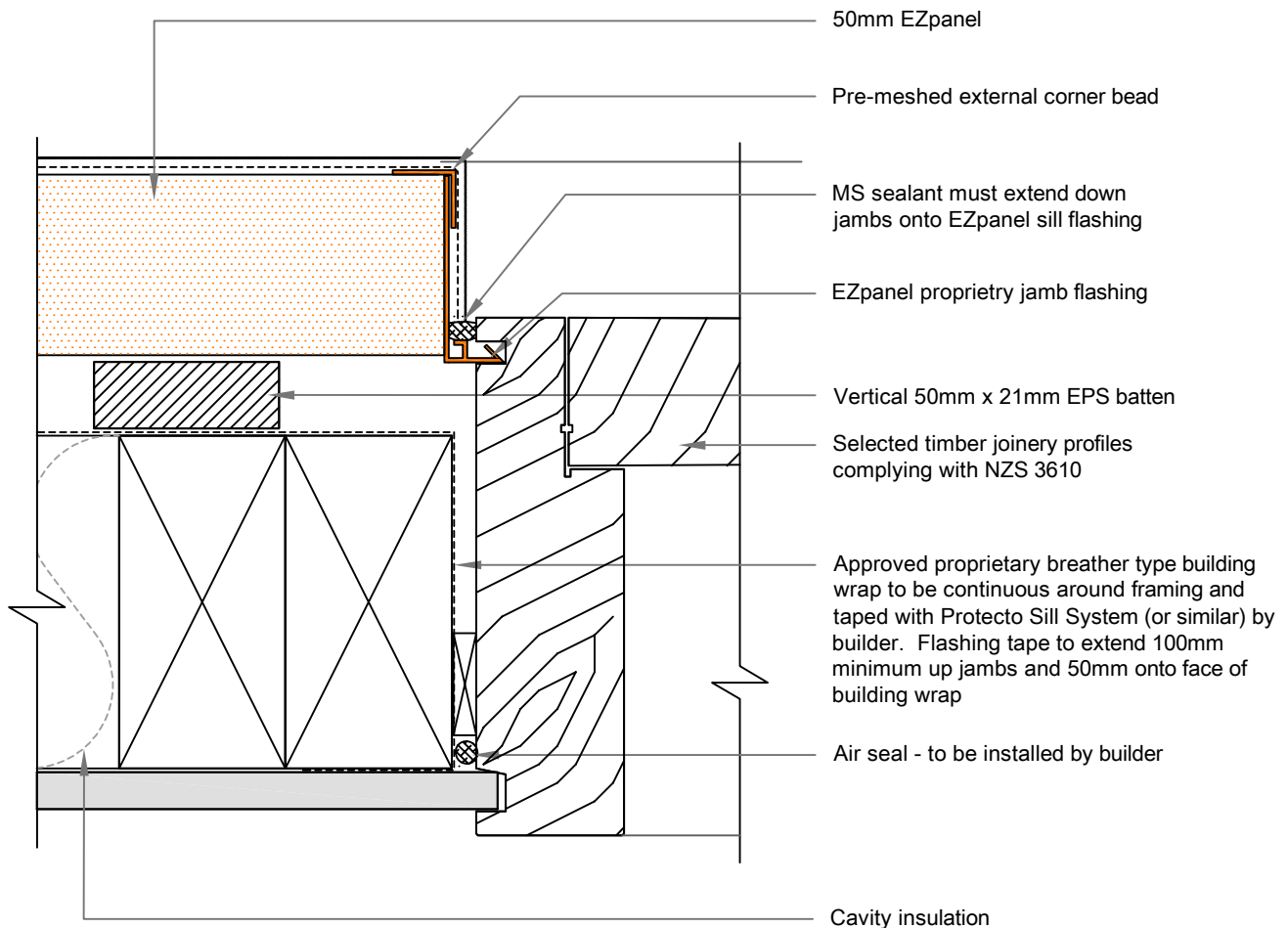


EzPanel

LIGHTWEIGHT CONCRETE CLADDING SYSTEM



Note: this drawing is outside of the BRANZ Appraisal.



Note:
Jambs and head flashing must be sealed or PVC welded where they intersect

Caution:
To ensure the proprietary flashing for this system can be installed correctly, please allow a gap of 30mm from the surface of the building paper to the front face of the timber joinery

04B

SCALE: 1:2

WINDOW JAMB DETAIL - TIMBER JOINERY

50mm EZpanel - 20mm cavity with EPS Battens