

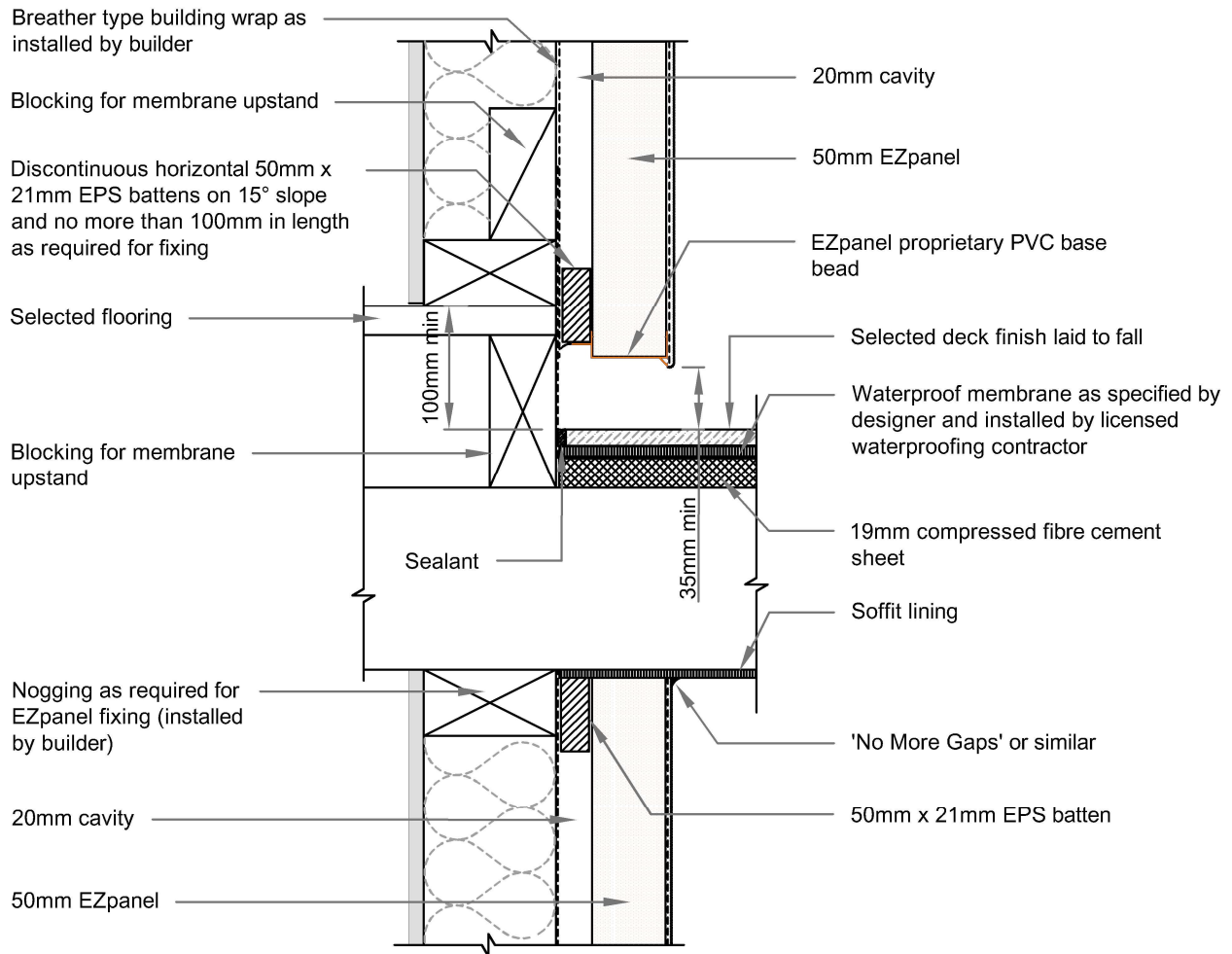


EZpanel

LIGHTWEIGHT CONCRETE CLADDING SYSTEM



Note: this drawing is outside of the BRANZ Appraisal.



Note: Waterproof membrane must extend 200mm up vertical surface under approved building paper and a minimum of 150mm up behind the cladding system

Note: The design of the flashings around the cantilevered floor joists is the responsibility of the designer and installation is the responsibility of the building contractor

12A

CANTILEVERED JOIST DETAIL

SCALE: 1:5

50mm EZpanel - 20mm cavity with EPS Battens