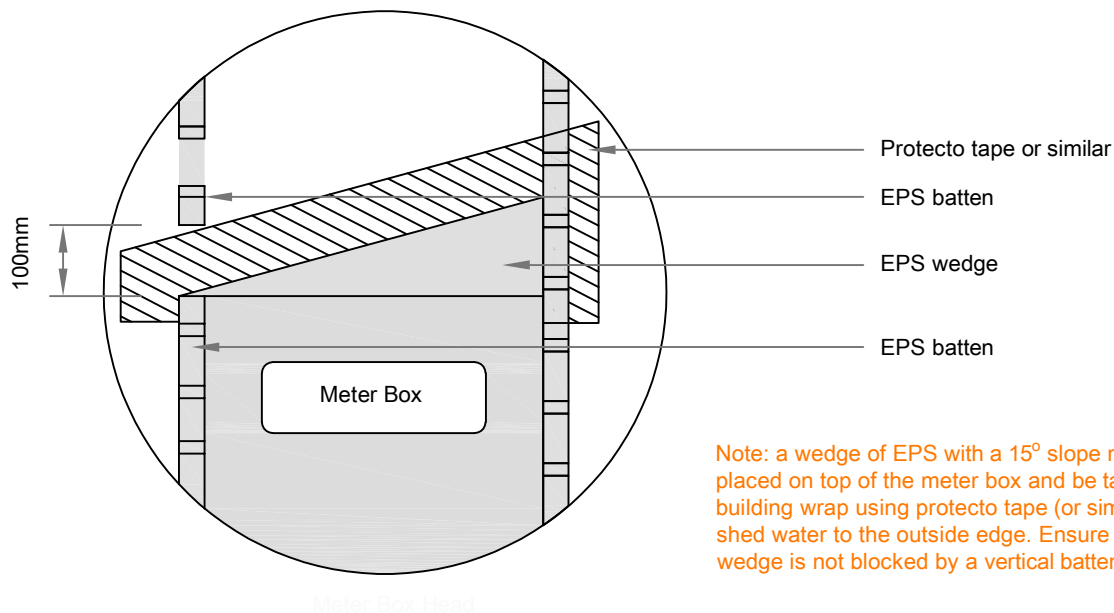
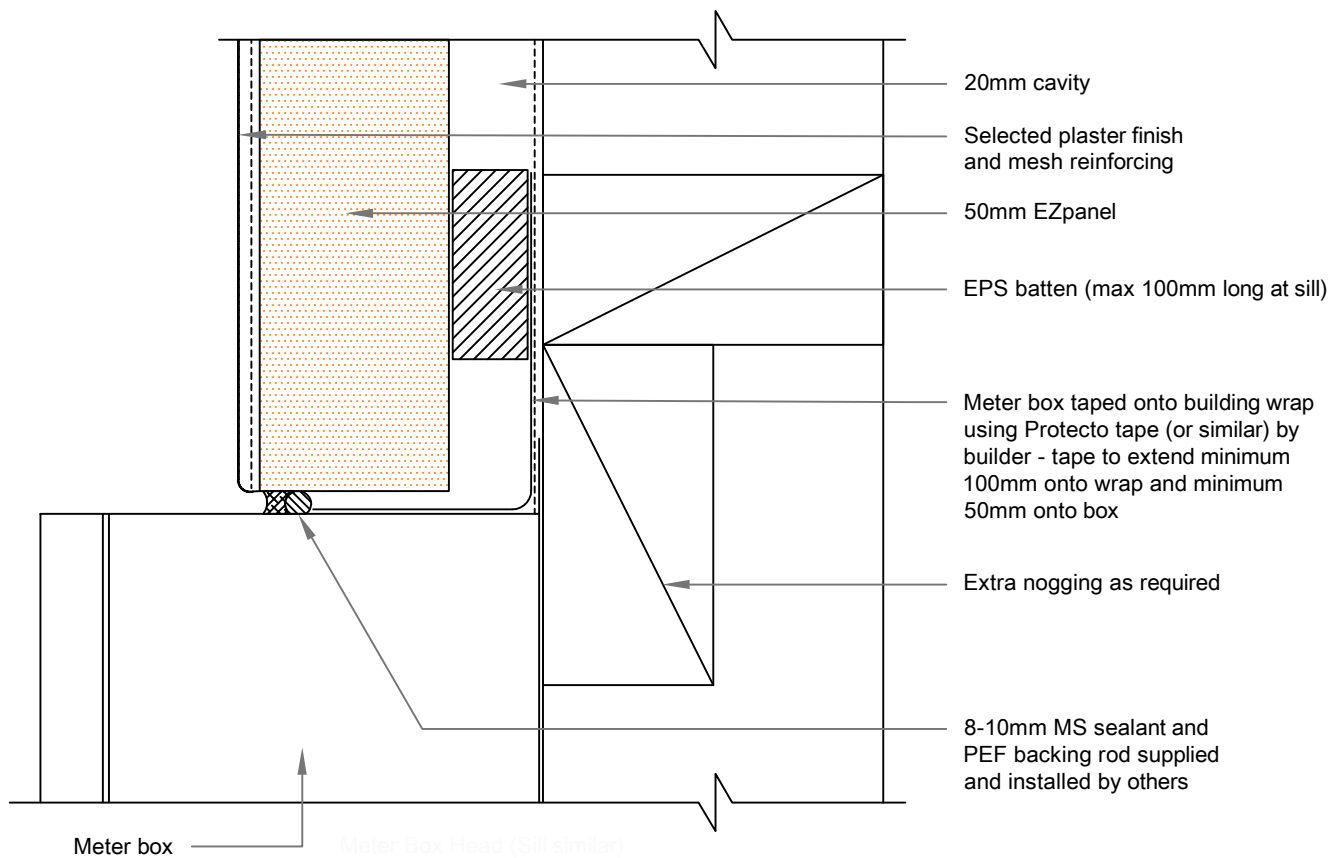




EzPanel

LIGHTWEIGHT CONCRETE CLADDING SYSTEM



Note: a wedge of EPS with a 15° slope must be placed on top of the meter box and be taped to the building wrap using protecto tape (or similar) to shed water to the outside edge. Ensure tip of the wedge is not blocked by a vertical batten

25A

METER BOX DETAIL

SCALE: 1:2

50mm EZpanel - 20mm cavity with EPS Battens