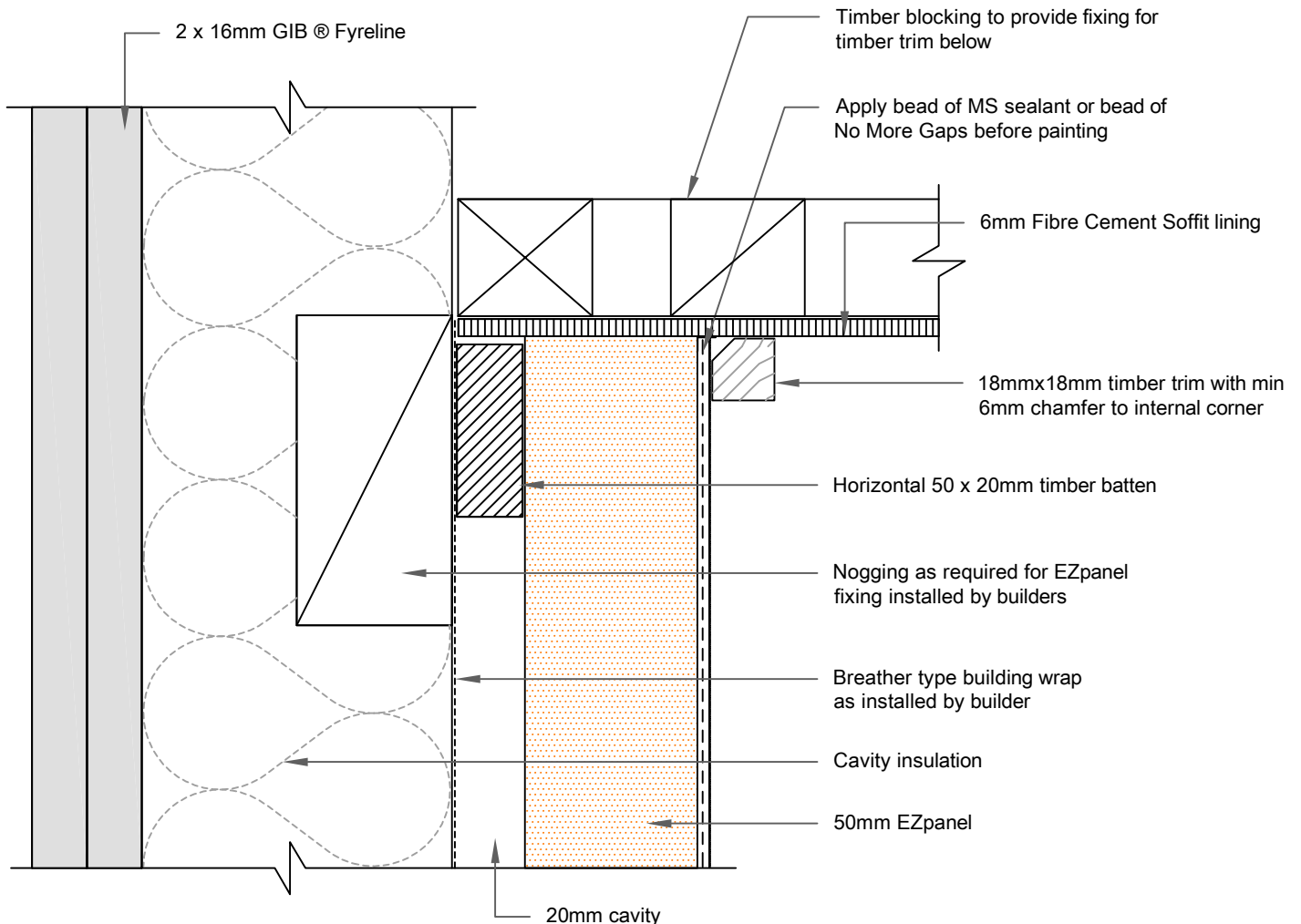




EzPanel

LIGHTWEIGHT CONCRETE CLADDING SYSTEM



FRR 120/120/120

- 90x45 framing at 400mm centers
- 140x45 framing at 600mm centers
- 2400mm stud height
- 50mm EZpanel
- 2 x 16mm GIB ® Fyreline one side fixed to GBTL 120
- Timber framing as per section 6.3
- Specialized Construction Products selected plaster finish with mesh reinforcing

The external walls are required to be fire rated depending upon the situation when the wall is close to a boundary or a neighboring property in order to comply with NZBC clause C3. The walls included in this section are load bearing walls as per NZS 3604. Special attention must be paid to junctions and penetrations in external walls. The external claddings may be required to be fixed over a cavity and the cavity must not open into the roof space or sub floor space.

For buildings within the scope of NZS 3604 the bottom plates for all fire rated walls must be supported and fixed to floors using a Pryda Brace Anchor fixed with Ramset 'Anka Screw' M12 X 150mm or proprietary fasteners as per Section 7.5.12. of NZS 3604. For Specific Engineering Design projects (SED), it is the structural engineer/designers responsibility to ensure that the floor and wall connections are designed / constructed to withstand the emergency loading requirements expected as per Clause B1 of NZBC

FE43

SCALE: 1:2

SOFFIT DETAIL

50mm EZpanel - 20mm cavity with timber battens - FRR 120/120/120