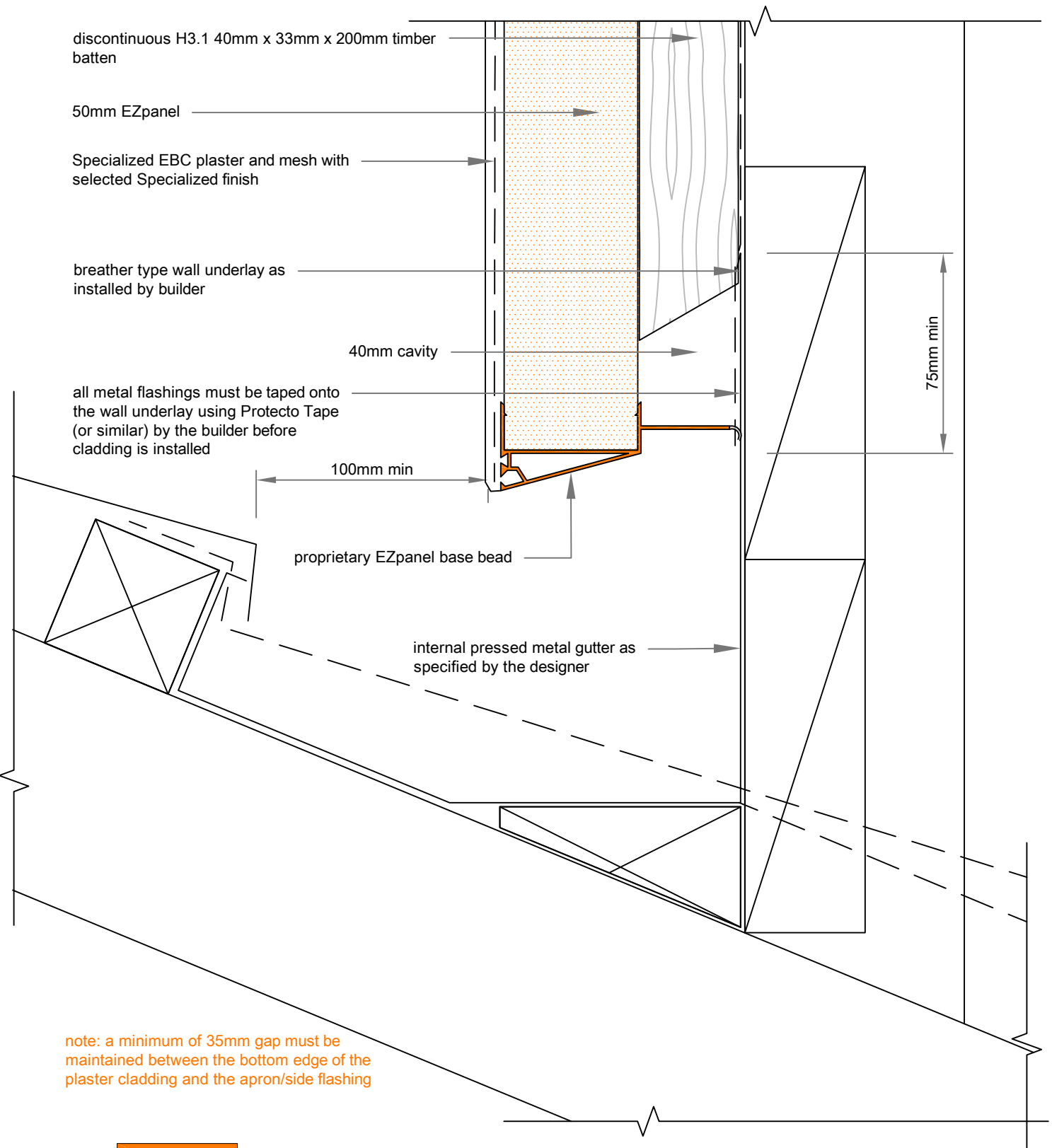




EzPanel

LIGHTWEIGHT CONCRETE CLADDING SYSTEM



note: a minimum of 35mm gap must be maintained between the bottom edge of the plaster cladding and the apron/side flashing

11A

SCALE: 1:2

HIDDEN GUTTER DETAIL

50mm EZpanel - 40mm cavity with timber battens

note: metal flashing must extend a minimum of 75mm up behind cladding

