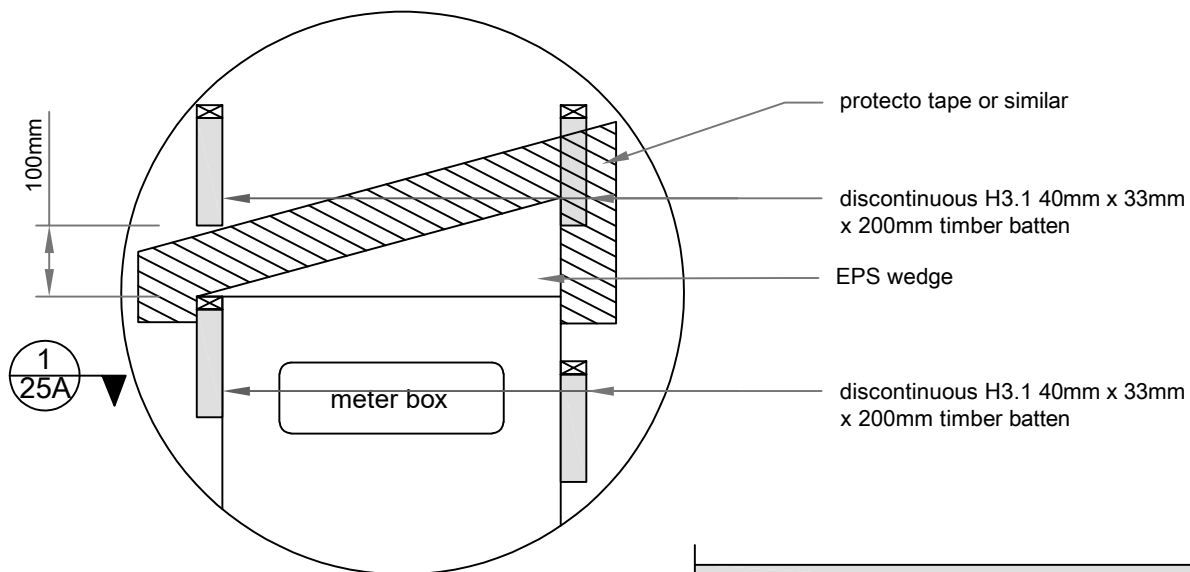


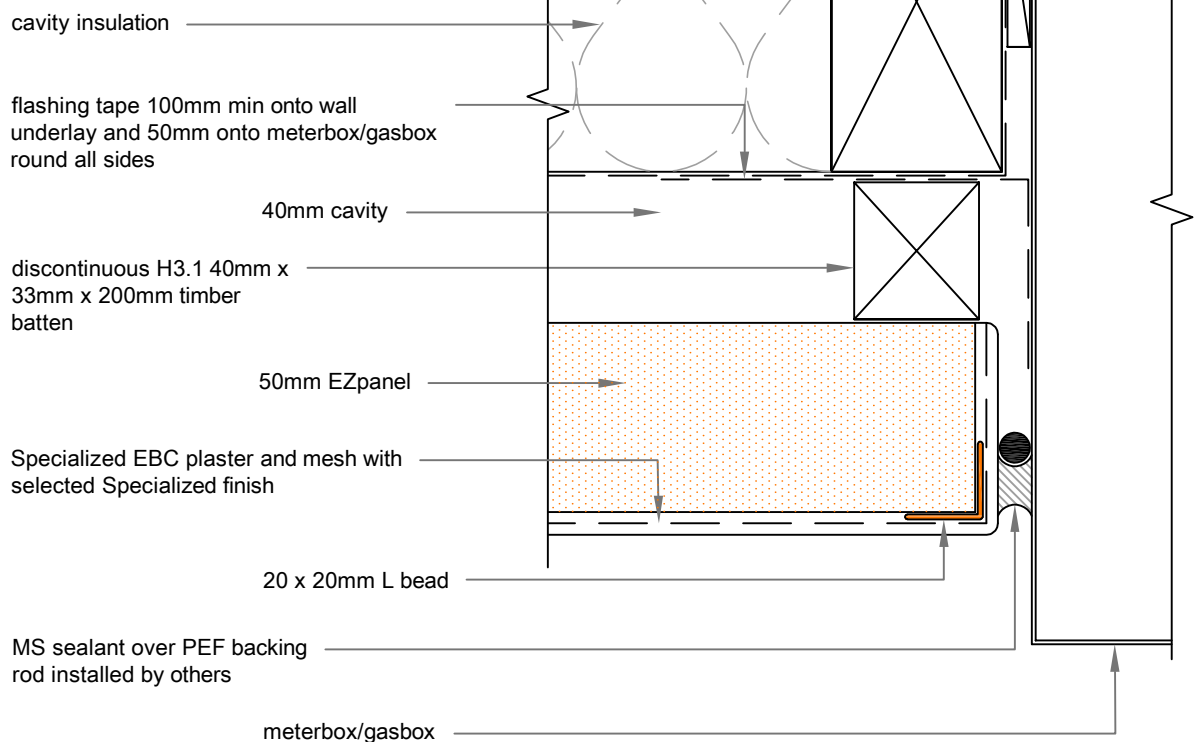


EzPanel

LIGHTWEIGHT CONCRETE CLADDING SYSTEM



note: a wedge of EPS with a 15° slope must be placed on top of the meter box and be taped to the building underlay using protecto tape (or similar) to shed water to outside edge. Ensure tip of wedge is not blocked by vertical batten



Jamb Section 1
25A

25A

SCALE: 1:2

METER BOX DETAIL

50mm EZpanel - 40mm cavity with timber battens